



Charolias

- High Growth Breed
- Originally from France
- Know for Muscle and Cutability





provided by Dr. Robert Kropp

Chianina

- Developed in Italy
- Known for size and Growth
- Referred to as the tallest breed of cattle



provided by Dr. Robert Kropp



Maine Anjou

- Developed in France
- Crossing Durham and Mancelle Breeds
- Good Muscling







provided by Beate Milerski

Simmental

- Originally developed in Switzerland for meat milk and draft
- Noted for high growth rate, milking ability, and carcass cutability





8288 Hascall Street • Omaha, Nebraska 68124 • 402-393-7200 • www.shortborn.org

Shorthorn

- Originated in England
- With three distinct color patterns
- Considered a Maternal Breed



8288 Hascall Street • Omaha, Nebraska 68124 • 402-393-7200 • www.shorthorn.org



provided by Dr. Robert Kropp

Hereford

- Can be horned or polled
- Hardey British Breed which in recent breeds combined poled and horned associations.



Gelbvieh

- Developed in Germany as a dual purpose breed
- Has good carcass cut ability
- Early puberty





Santa Gertrudis

- Developed in Texas by crossing the Brahman and Shorthorn
- Became first official breed developed in US.
- Known for heat tolerance
- Maternalness



© 1997 Oklahoma State University



© 1997 Oklahoma State University

Angus

- British Breed with highest registration in the US
- Noted for mothering ability and carcass marbeling



© 1997 Oklahoma State University



Brahman

- Bos Indicus Breed known for heat and insect tolerance



© 1997 Oklahoma State University



© 1997 Oklahoma State University

Brangus

- Developed in US Brahman and Angus Cross
- Breed for heat tolerance from Brahman Maternal and carcass traits of Angus



© 1997 Oklahoma State University



Limousin

- Developed in France Moderate growth rate and frame size
- High carcass cut ability





Red Angus

- From Scotland
- Maternal with good terminal related performance





Red Poll

- Developed as dual purpose breed from England
- Moderate size fatten quickly
- Good milk supply





provided by Dr. Robert Kropp

Salers

- Found in ancient cave drawings 7000 years ago in France
- Considered to be one of the oldest and genetically pure breeds of Europe



provided by Dr. Robert Kropp



Texas Longhorn

- Due to its natural selection and adaption for being hardy aggressive and adaptable.





Columbia

- Large frame U.S. breed, developed from Lincolns and Rambouillets

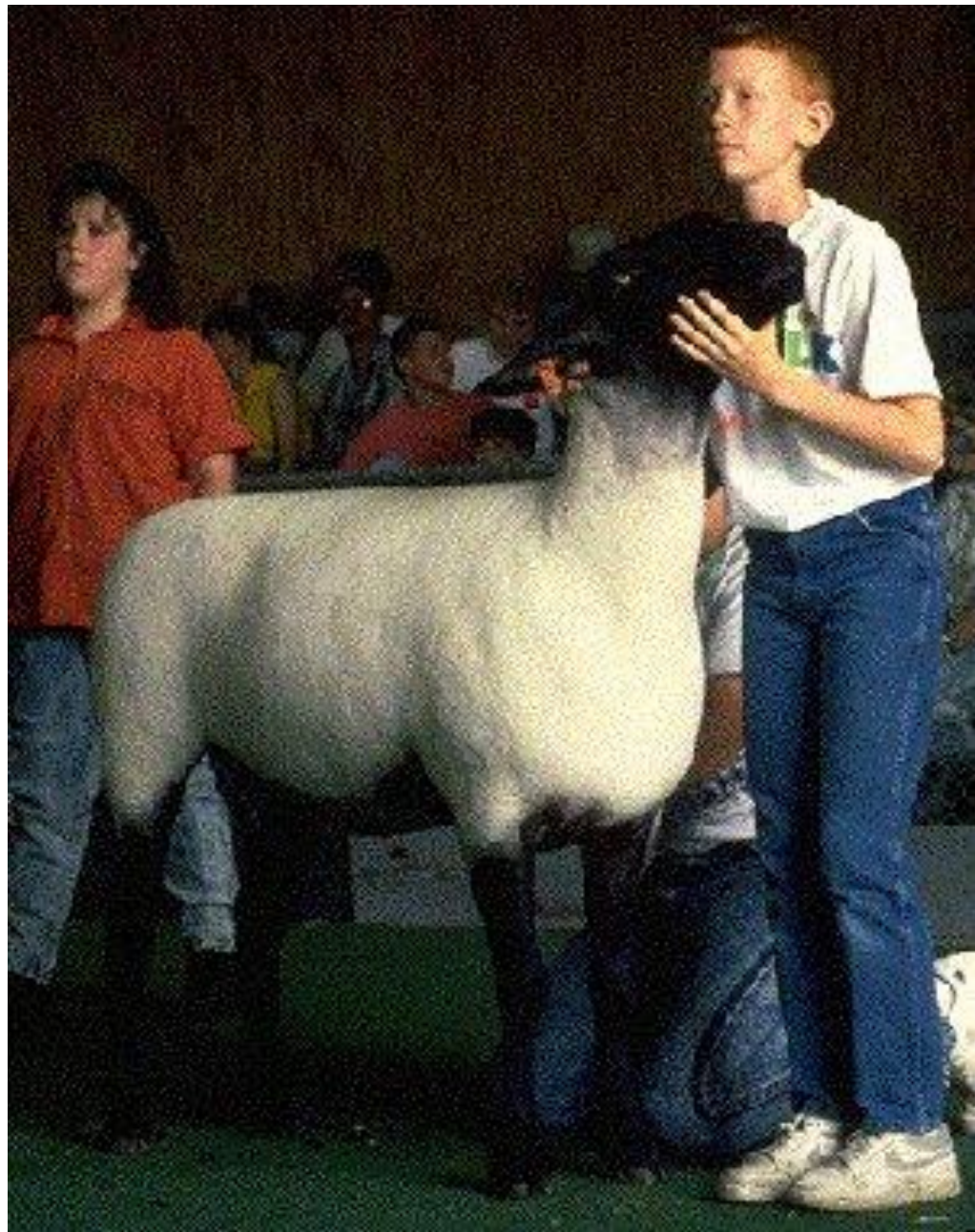


Dorset

- English, white face, meat breed known for out of season breeding

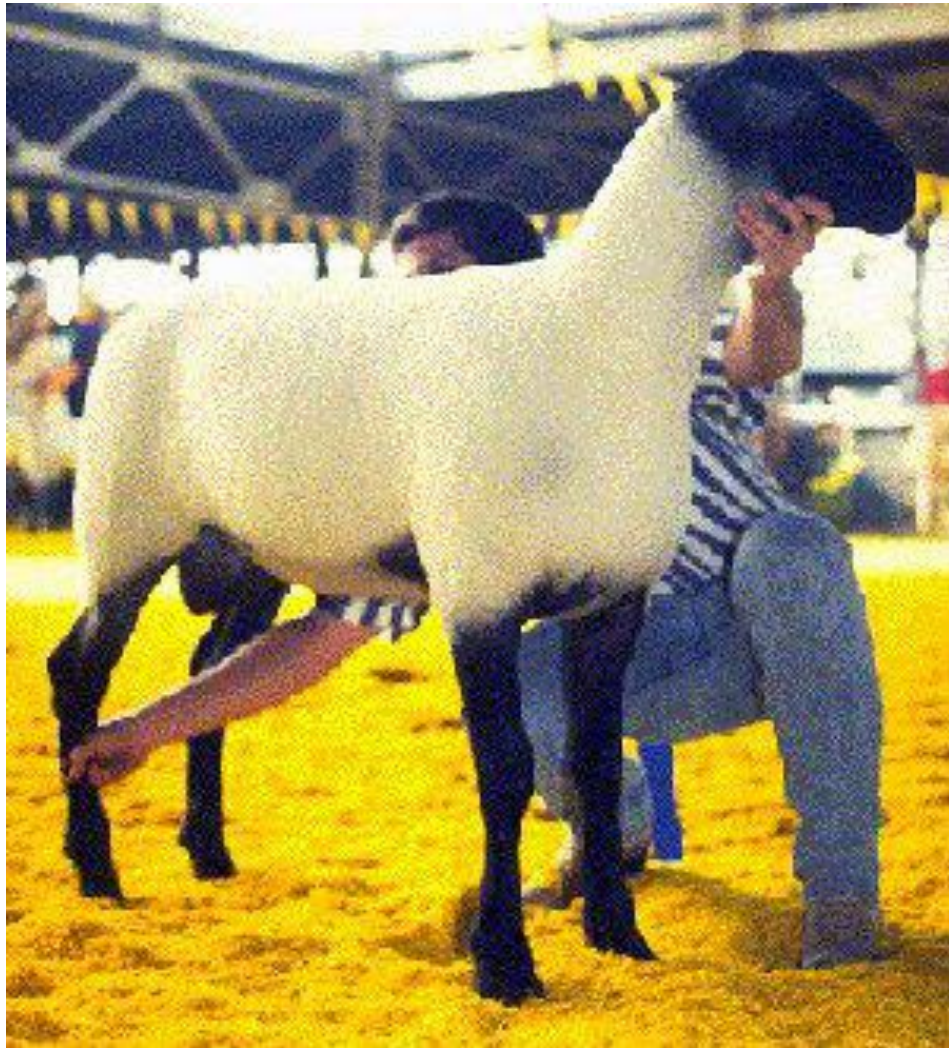


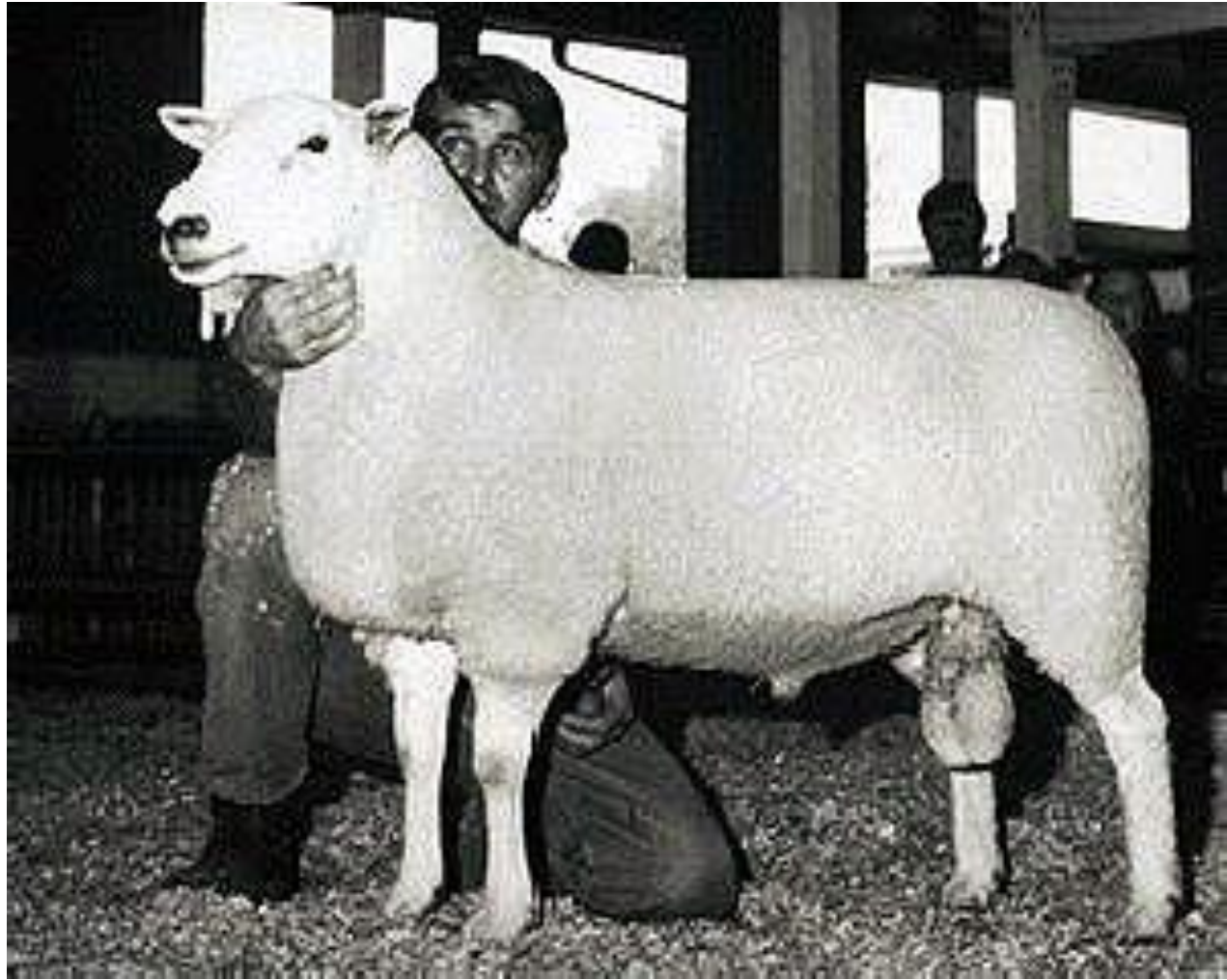




Suffolk

- Large Frame black faced breed known for high growth rate and carcass cutability from England





Montedale

- Breed developed from Colombia and Cheviot Cross
- Noted for High Quality Carcass
- Excellent Wool

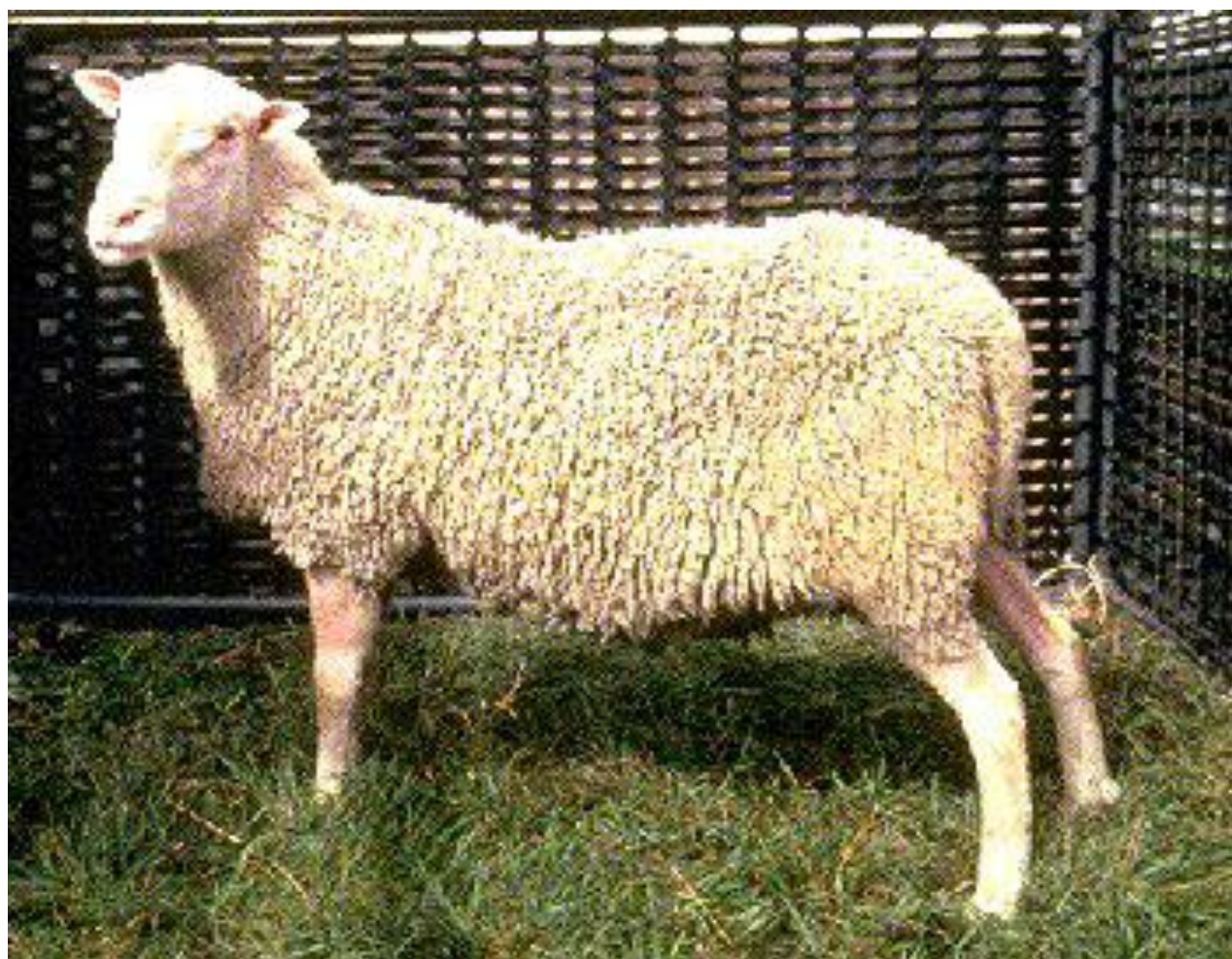


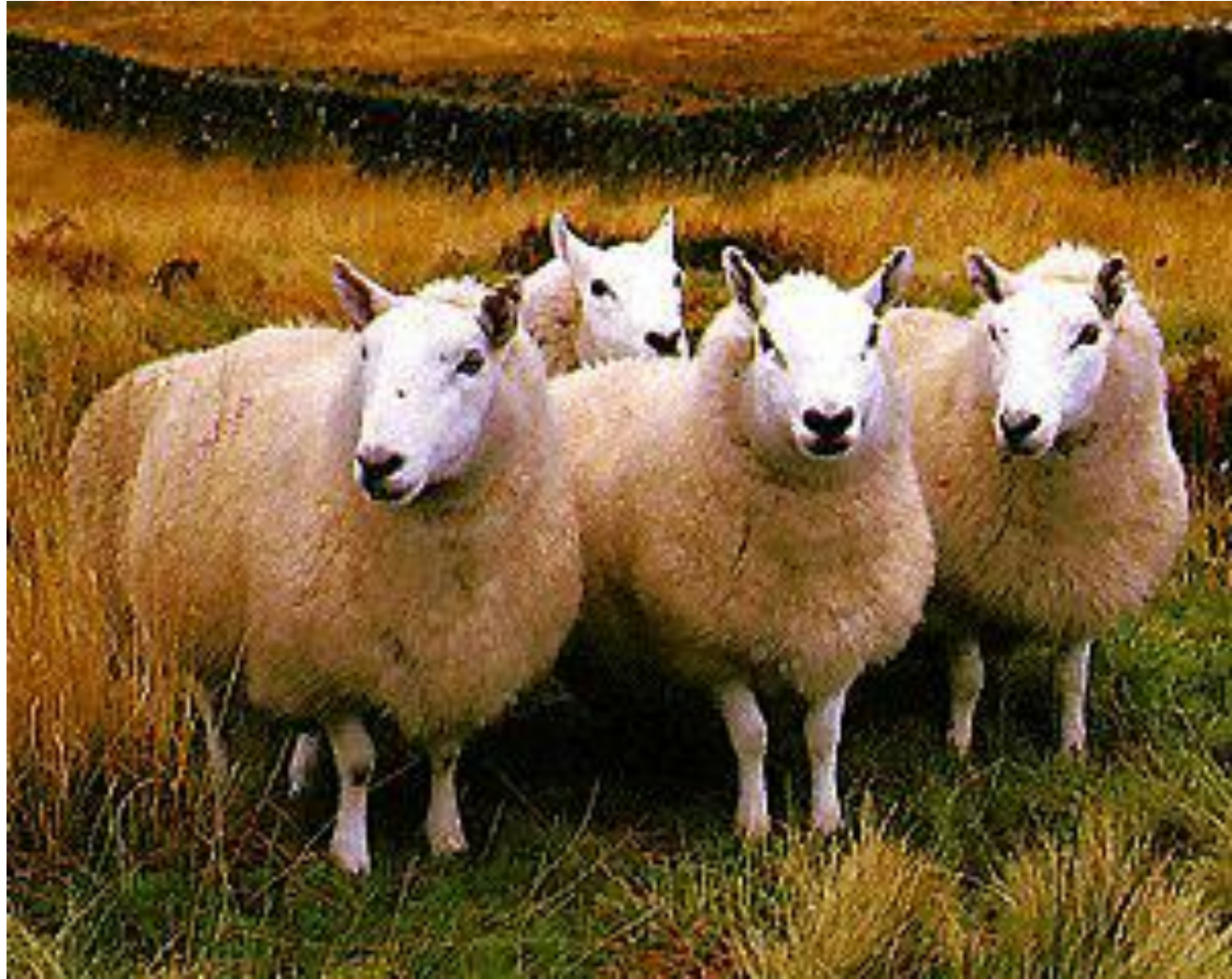


provided by James Taylor

Finnsheep

- Lighter muscled breed from Finland noted for prolificacy.





Cheviot

- Small size meat breed noted for its hardiness from Scotland





Rambouillet

- Wool breed developed in France and Germany from Merino breed



© 1998 Oklahoma State University

Provided by Terry & Viki Clark

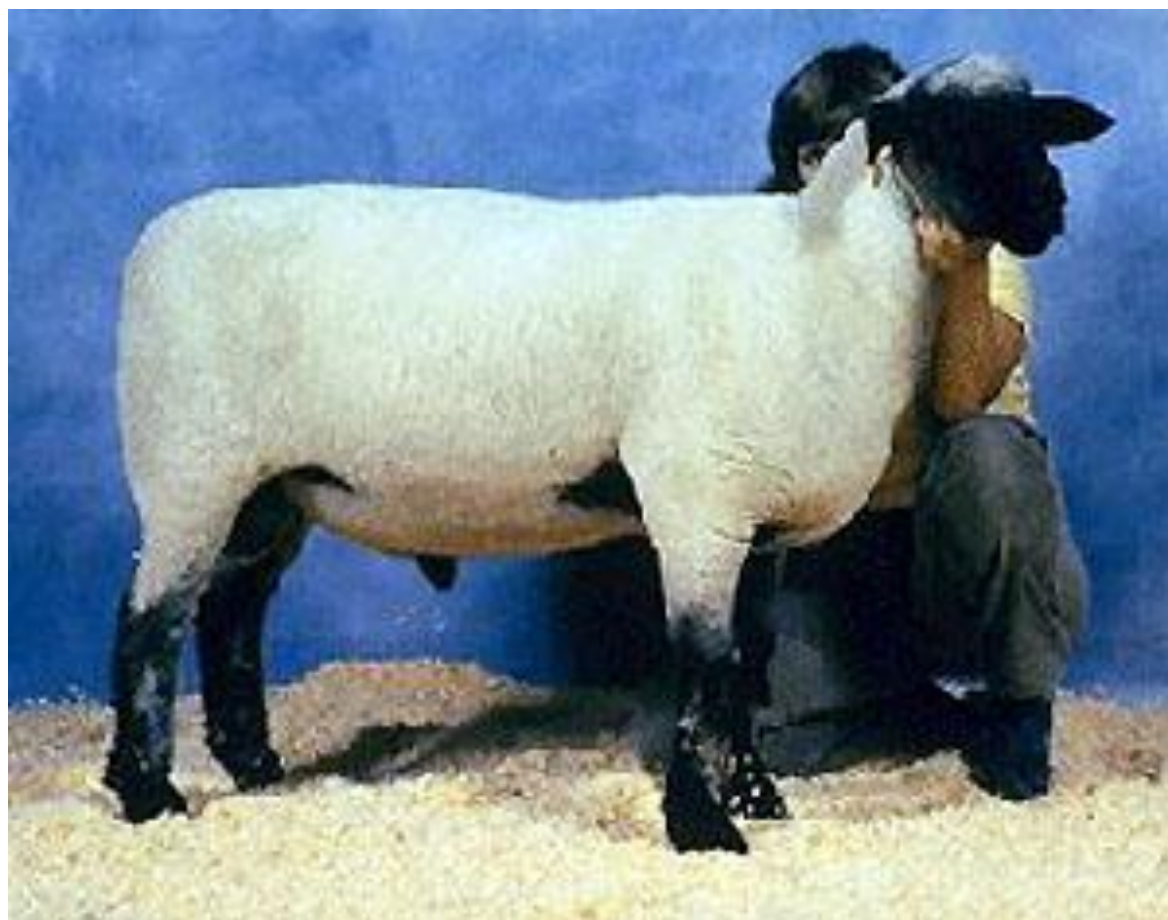




Corriedale

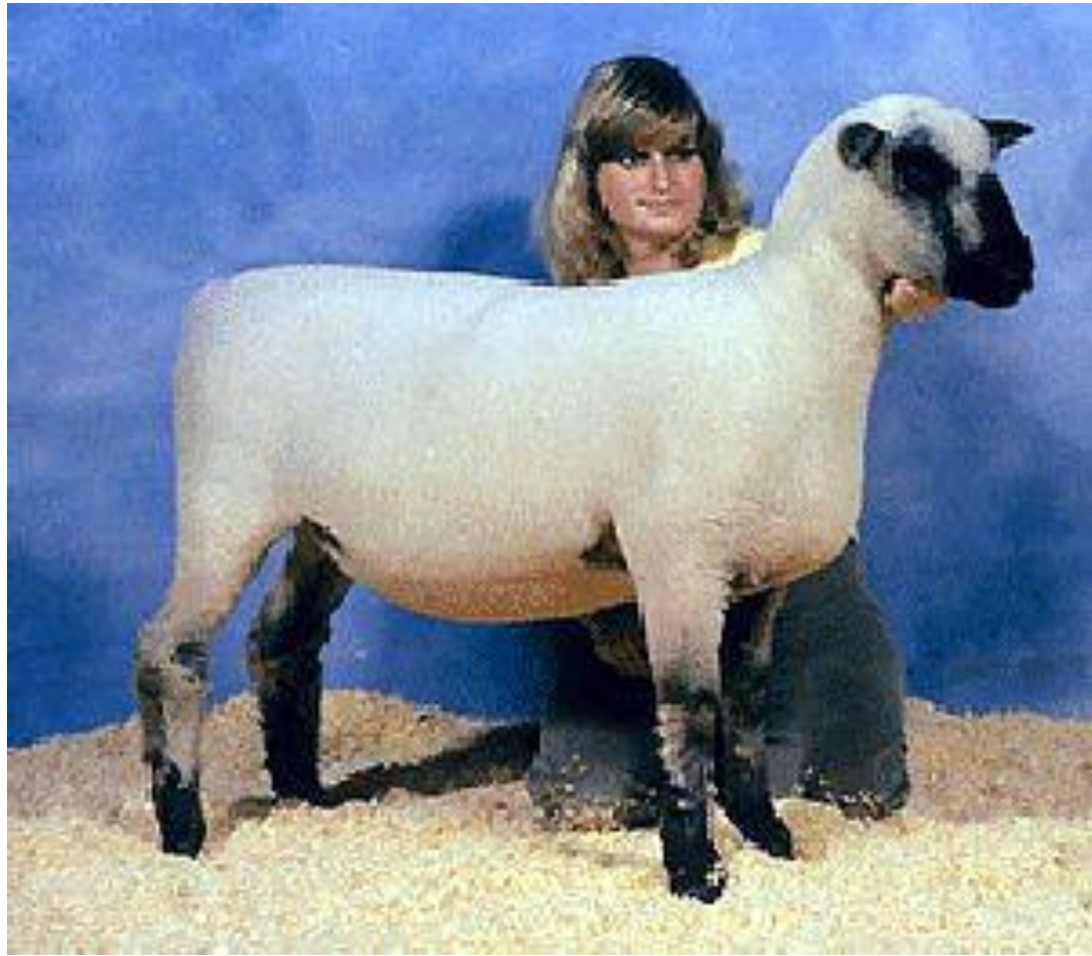
- Large frame wool breed developed from crossing Lincoln or Leicester rams on Merino Ewes.





Hampshire

- Large Frame, English Meat breed with wool cap and black face



Shropshire

- English Breed known as one of the heaviest wool producers among medium wool breeds







© 1997 Oklahoma State University

Provided by Select Genes Ltd

Dorper

- Developed in South Africa
- Mutton Sheep
- Very Fertile Sheep Breed



Provided by Mr P J Cilliers



© 1999 Oklahoma State University

Provided by Mr P J Cilliers



© 1998 Oklahoma State University

Provided by Katahdin Hair Sheep International

Katahdin

- Hair Sheep Breed Developed in the US



Provided by Katahdin Hair Sheep International



provided by Sally Anne Thompson

Lincoln

- Not a popular breed in the US
- Unique because fleece is carried heavy locks that are often twisted into a spiral

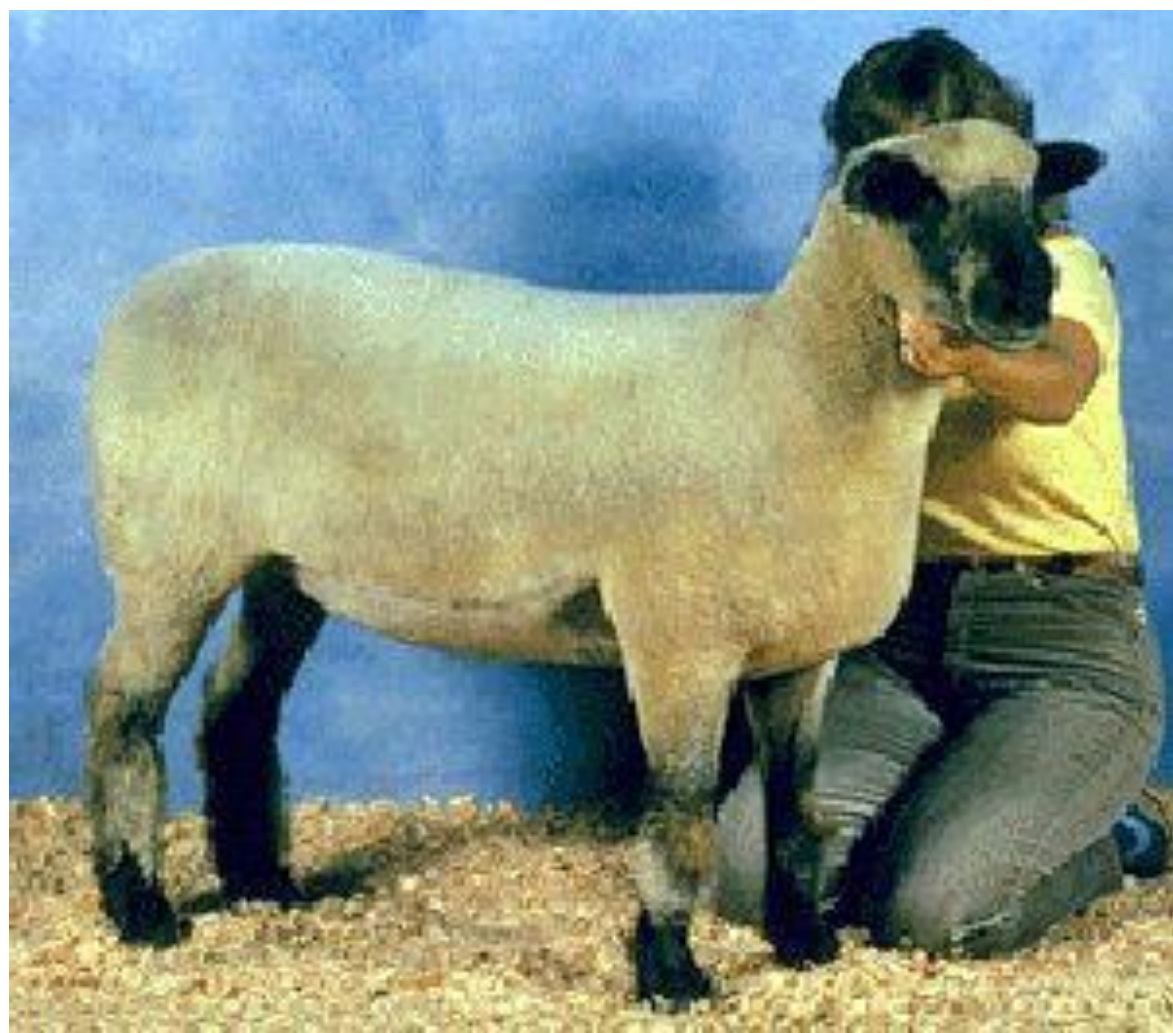




Merino

- Fine fleeced breed with heavy wool production from Spain





Oxford

- Results of crossing Cotswolds and Hampshire
- Produces the heaviest fleece of any of the down breeds





provided by Sally Anne Thompson

Southdown

- Early Maturity
- Good lambing ability and average milk production
- Excel in crossing breed programs
- Meaty lamb carcass at light weights and hot house lambs





Tunis

- Medium size meat breed
- Known for disease resistance
- Able to remain productive on marginal land.



Tennessee Woodenleg (fainting)

- Myotonic, muscles stiffen when frightened. Hereditary condition makes the goats very muscular





© 1998 Oklahoma State University

provided by Dr. An Peischel

Kiko

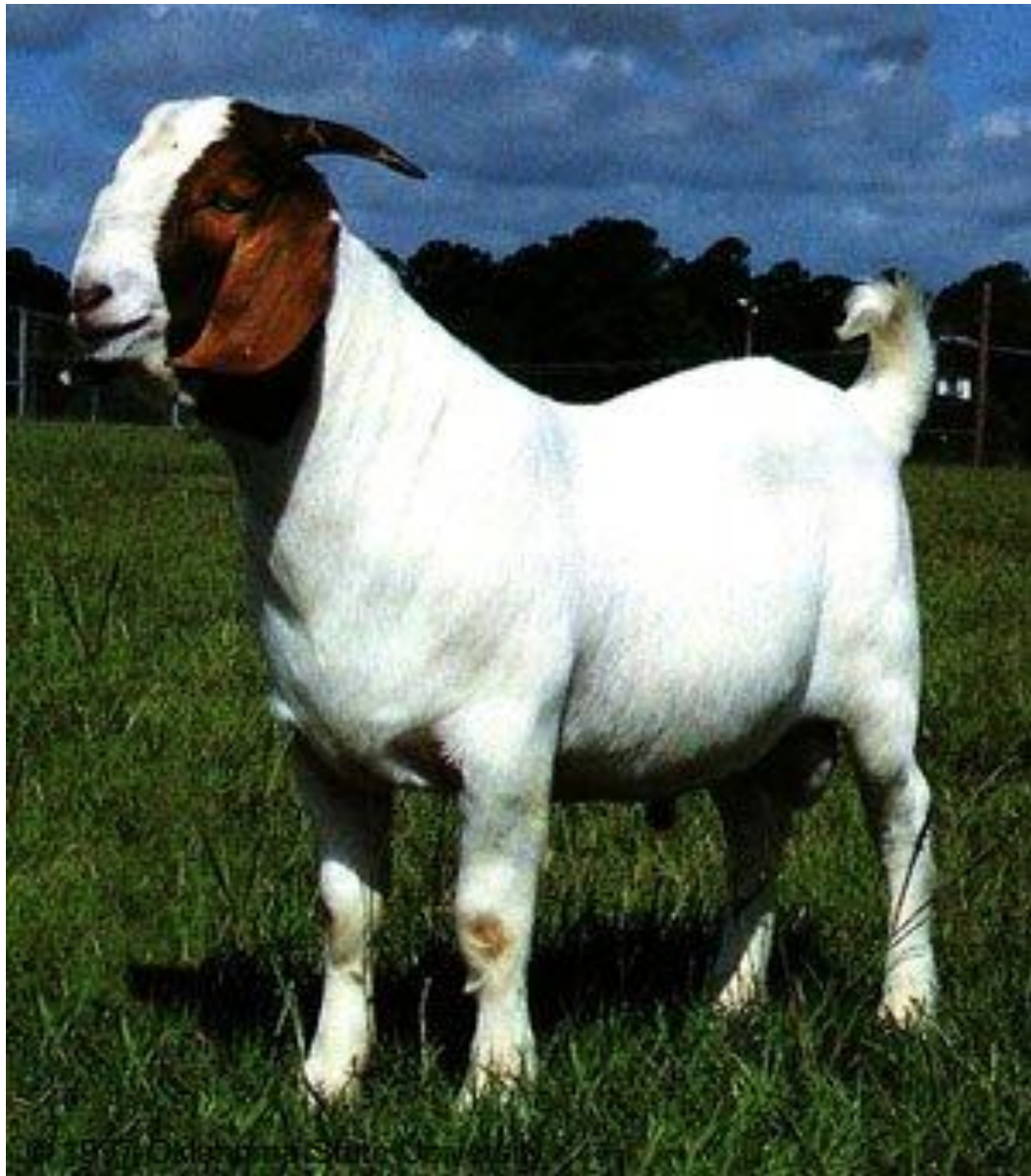
- Hardy, able to gain weight under normal conditions and without supplemental feeding. Large framed, generally white with a coat that ranges from slick in the summer to flowing hair when run in the mountain country in winter.



provided by Dr. An Peischel



provided by Dr. An Peischel



Boer

- Prominent strong head with brown eyes and gentle appearance. Gently curved nose with wide nostrils and a well formed mouth with well opposed jaws. Boldly three-dimensional body: long, deep, and wide.





© 1997 Oklahoma State University

Angora

- Valuable Characteristic it has Mohair that is clipped



© 1997 Oklahoma State University



© 1997 Oklahoma State University

Pygmy

- Exported to Africa to zoos where they were displayed as exotic animals



© 1997 Oklahoma State University



Berkshire

- Predominantly black with erect ears, originally from England, noted for pork quality tenderness and marbling.



provided by National Swine Registry

Hampshire

- Terminal Sire breed with unique color patterns
- Noted for muscle and cutability



Pietrain

- Noted for extreme muscle volume and shape, with a high propensity for stress which is related to pork quality concerns.



Poland China

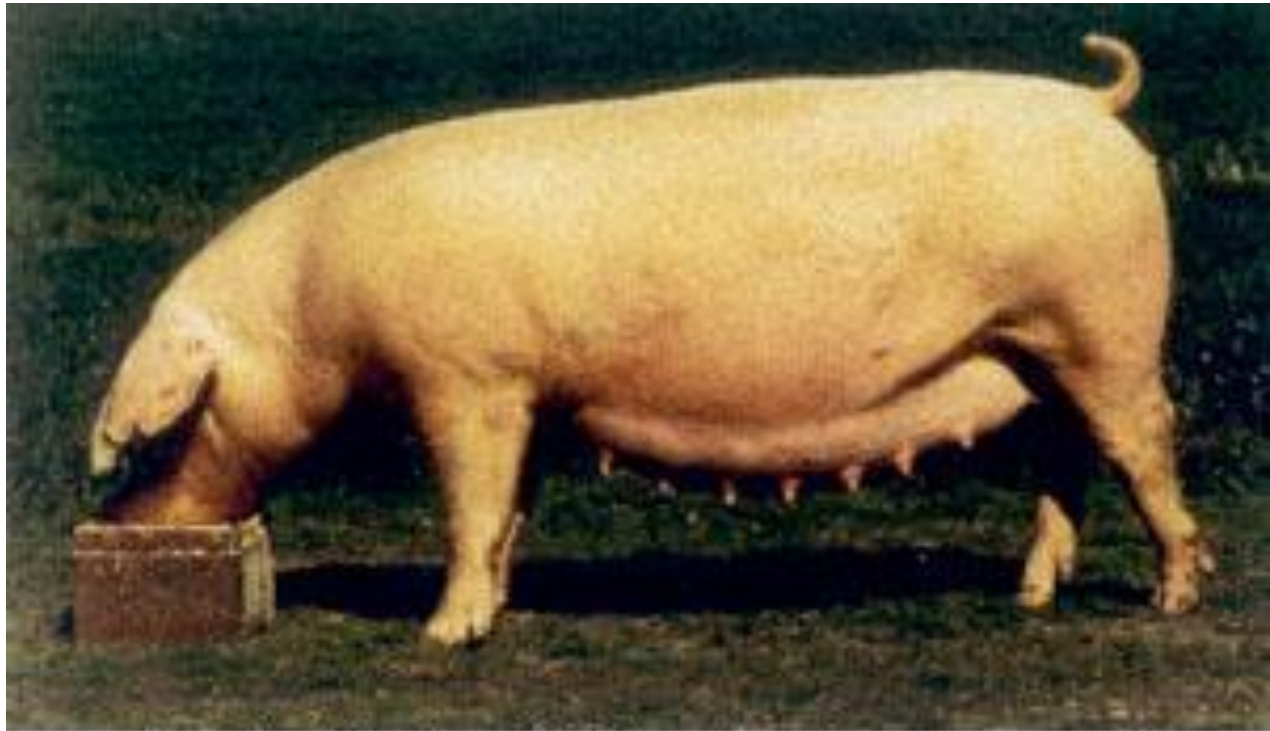
- Heavy muscle black breed
- 6 white points with droopy ears
- From Ohio



provided by National Swine Registry

Spot

- Black and White
- Developed in US
- Noted for rapid growth
- As aggressive breeders



provided by National Swine Registry

Landrace

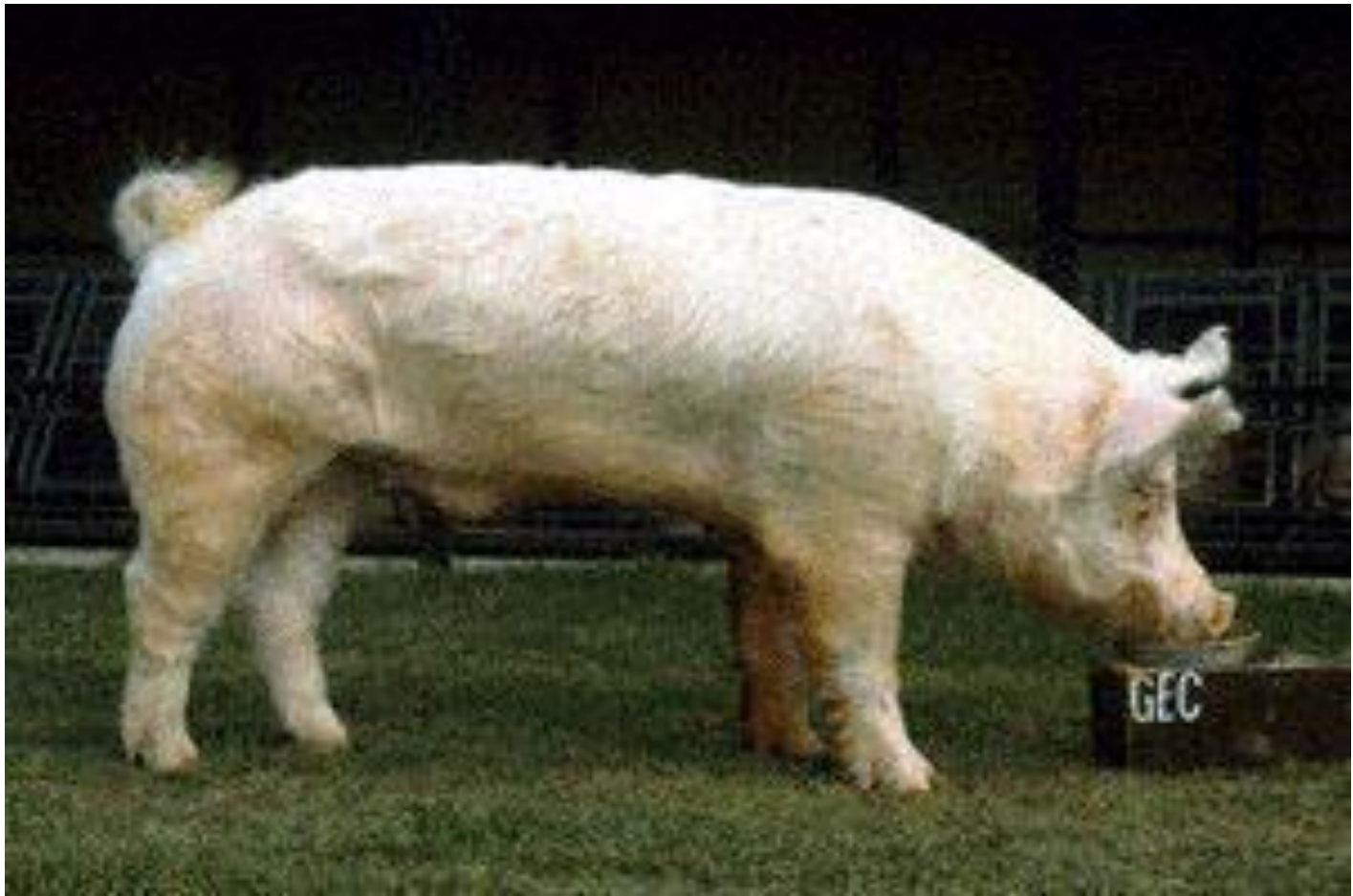
- Noted for large litters and large droopy ears, generally refined in bone.

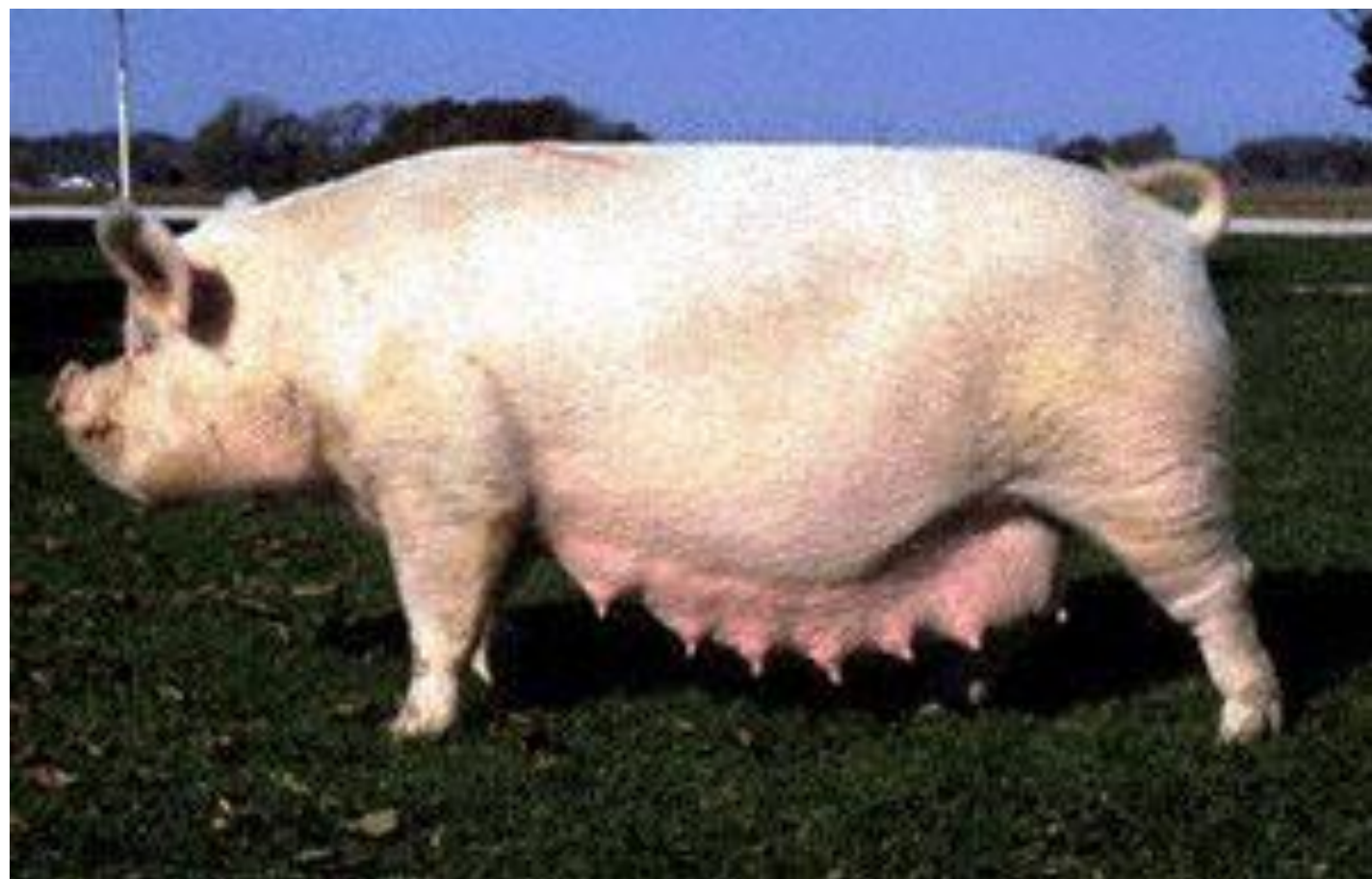


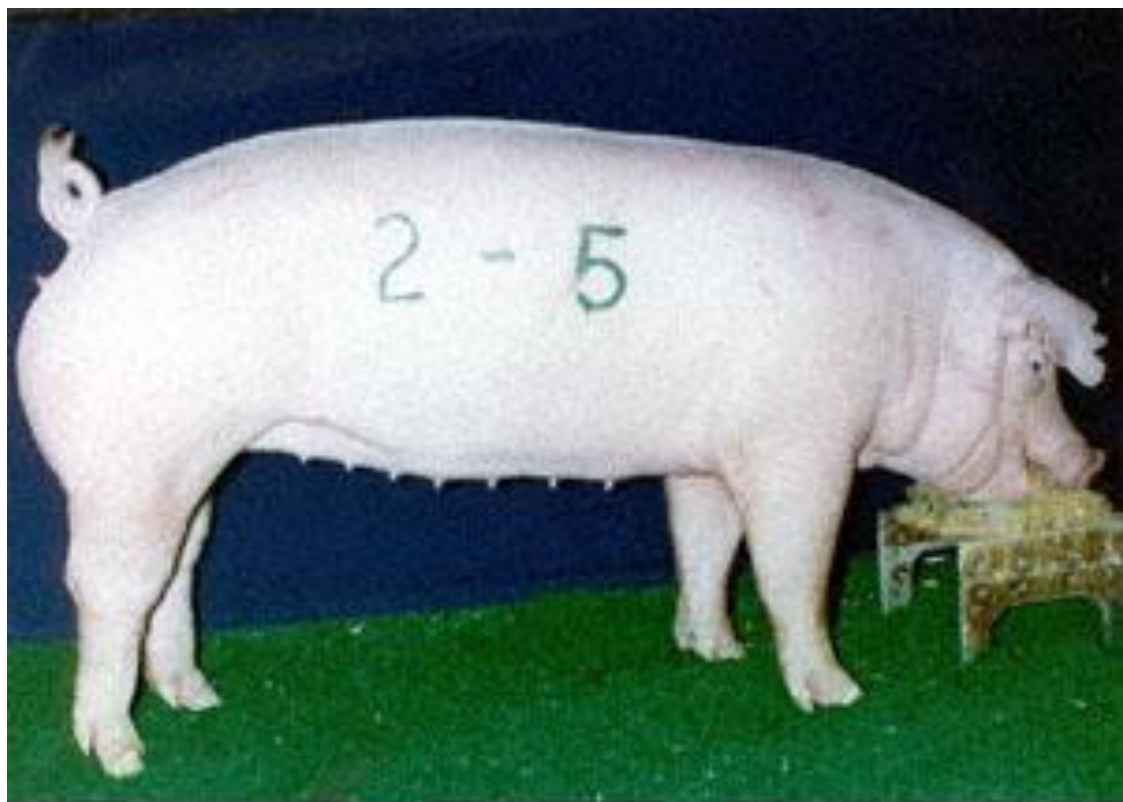
provided by National Swine Registry

Yorkshire

- Erect Ears
- Known as the mother breed



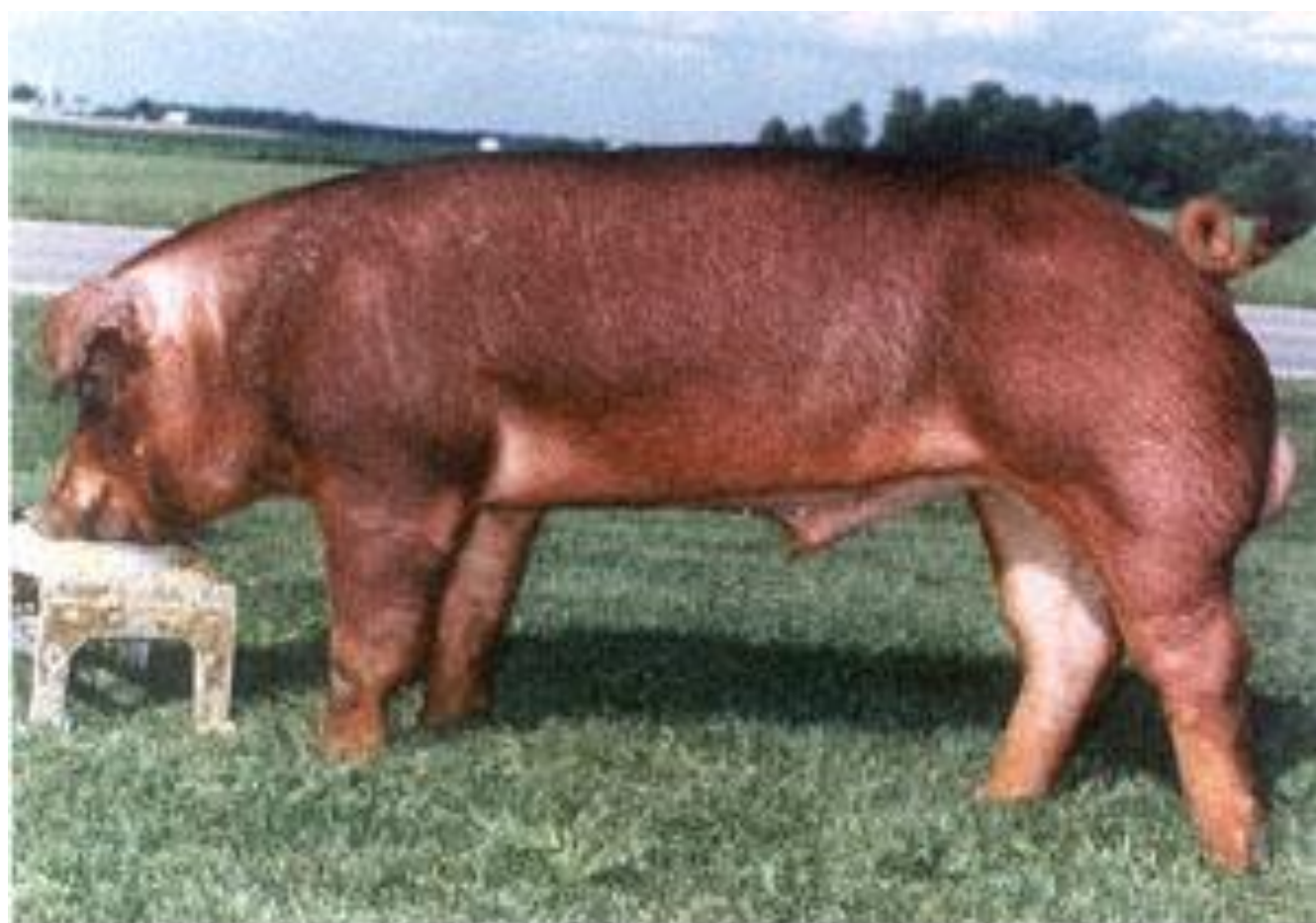




provided by National Swine Registry

Chester White

- Known as Maternal breed
- High conception breed
- From Pennsylvania



provided by National Swine Registry

Duroc

- Noted for high growth rate, durability, and pork quality developed in New Jersey and New York



Provided by Michael von Luttwitz

Tamworth

- Rugged, active breed known as a lean type hog with long neck, snout, and leg.

Landrace



Yorkshire

